

Historic, archived document

Do not assume content reflects current scientific knowledge, policies, or practices.

Routing 11-12

LIBRARY
RECEIVED
★ FEB 5 1904 ★

U. S. Department of

The AMERICAN FANCIER AND BREEDER

Vol. 21.

De Kalb, Illinois, January, 1904.

No. 1.



S. C. Brown Leghorns.

Second prize pen at last Cleveland show. The cockerel while moulting scored 93 3/4 by Theo. Hewes. These birds were bred and owned by E. W. Staebler, 36 Tremont St., Cleveland, O.

Poultry Supplies.

We are headquarters for poultry supplies of all kinds and are making unusually low prices on all poultry supplies. Write us your wants. We will be pleased to quote you prices. **C. W. GAULT CO.,** Kenney, Ill.

THE BEST YET

POULTRY AND FRUITS
A high-class monthly magazine; the latest and best about Poultry, Fruits, etc. Subscribe now. Only 25c a year. Address: **POULTRY AND FRUITS, Nashville, Tenn.**

National OIL Reporter

The Recognized Petroleum Authority of America.

The General Publishing Company, 87 89 Wall Street, prints the news of all oil fields in America furnished by most competent correspondents, an illustrated magazine of highest standing.

Subscription rates: One year, \$2.50
6 months, \$1.50
3 months, \$.75
Single copies, \$.10

ORFF'S

Farm and Poultry Review.
A Monthly Compendium of the Best Farm and Poultry Thoughts of the World.

Eight to thirty-two pages monthly; a readable home educator; so good, so cheap, that every one can become a subscriber.

Only 10 cents a year.

Farmer Orff,

Publisher and Editor.

2809 & 2811 Locust St.
St. Louis, Mo.

HOMES

IN OLD VIRGINIA

It is gradually brought to light that the Civil war has made great changes, freed the slaves, and in consequence has made the large land owners poor and finally freed the land from the original holders who would not sell until they were compelled to do so. There are some of the finest of land in the market at very low prices, land that produces all kinds of crops, grasses, fruits, and berries; fine for stock. You find green truck patches, such as cabbage, turnips, lettuce, kale, spinach, etc., growing all the winter. The climate is the best all the year around to be found, not too cold nor too warm. Good water. Healthy. Railroads running in every direction. If you desire to know all about Virginia send 10c. for three months subscription of the **VIRGINIA FARMER** to the Farmer Co., Emporia, Va.

THE HONORS AWARDED

To my Buff Leghorns during the past eight years, in which they have been bred, probably exceed in number those awarded to any other breeds. I have this year for the first time, under color on females and females as good as the Buff Cochin, no one has got better, at least I have not heard of it. Large circular free. Eggs \$2.

Geo. S. Barnes,
Battle Creek, Mich.

Mica Crystal Grit

Rock Combination of Silica, Aluminium, Magnesium and 12 per cent. of Iron

For Poultry, Pigeons, Ducks, Geese, Turkeys and Birds. No more bowel disease which is so fatal, and is largely caused by undigested food in the crop and gizzard where Mica Crystal Grit is used. It makes red combs and increases the egg production one-half. Give it a trial. Put up in two sizes, fowl and chick size; 100 pounds in a bag. Sent to any address, by freight, a \$1.00 per bag, \$4.00 for five bags. For sale by **Fancier & Breeder Pub. Co.,** DeKalb, Illinois.

Money in Honey!

The American Bee-Keeper

is an illustrated monthly of 40 pages, which deals with every phase of the bee-keepers' art, and labors especially in the interest of the inexperienced. Its contributors are the world's best. Its editor is acknowledged to have had a wider bee-keeping experience than any other bee paper editor in America. **THE BEE NEWS OF THE WHOLE WORLD IS GIVEN EACH MONTH.**

THE AMERICAN BEE-KEEPER is in its thirteenth year, subscription price 50 cents a year in advance. **SIX MONTHS TRIAL TO NEW SUBSCRIBERS, 20 CENTS.**

Sample copy—also catalogue of bee supplies made by the **W. T. Falconer Mfg. Co.**—free. Address,

AMERICAN BEE-KEEPER,
Falconer, N. Y.

50 YEARS' EXPERIENCE

PATENTS

TRADE MARKS
DESIGNS
COPYRIGHTS & C.

Anyone sending a sketch and description may quickly ascertain our opinion free whether an invention is probably patentable. Communications strictly confidential. **HANDBOOK** on Patents sent free. Oldest agency for securing patents. Patents taken through **Munn & Co.** receive special notice, without charge, in the

Scientific American.

A handsomely illustrated weekly. Largest circulation of any scientific journal. Terms, \$3 a year; four months, \$1. Sold by all newsdealers. **MUNN & Co., 361 Broadway, New York**
Branch Office, 625 F St., Washington, D. C.

25c For Your Farm

may be obtained through me. No matter where located, send description and selling price and learn more. **W. H. Orlander, 1215 Filbert St., Phila., Pa.**

White WYANDOTTES

and Golden Sabright Bantams

of the choicest breeding for sale. All bred from high scoring pers. Eggs for hatching. Write for prices and full information. **Lloyd E. Thompson, Sterling, Ill.**

Free Advertising

Send 25 cents for a year's subscription to **THE RURAL SUN** a large illustrated monthly devoted to Poultry, Pigeons, Pet Stock, Farm and Home, e.c., and your card will be inserted in Breeder's Column, one year free. Circulation 5,000.

S. A. Carrick, Orangeville, Md.

The Rural Sun

PATENTS

Send 25 cts and we will send you the

PROGRESSIVE AMERICAN (the Patent Authority of America) and **THE AMERICAN FANCIER AND BREEDER** for a 3-month's trial subscription and if you have an idea on which you wish to secure a patent we will upon receipt of a description, sketch, or model of your invention, have made for you, free of charge, a guaranteed search of the Patent Office Records to ascertain whether a valid patent with broad claims can be secured by you on your idea. (The regular charge is \$5.00.) If you subscribe for **PROGRESSIVE AMERICAN** this search will cost nothing. We make this liberal offer trusting that our efforts in your behalf will induce you to become a permanent subscriber. If we find that your idea is patentable we will get you a Certificate of Patentability which will be of great assistance to you in raising capital. Write today. **PROGRESSIVE AMERICAN,** 57 North 13th St., Philadelphia, Pa.

THE STANDARD POULTRY JOURNAL

is an up-to-date illustrated monthly journal devoted to poultry for profit. Contains 24 to 32 pages monthly, filled with the best and most practical information written by the most prominent writers in the country. The regular subscription price of the Standard is **50 Cents Per Year** but for a short time we will receive yearly subscriptions at 25 cents. Send 25 cents at once and receive this bright and spicy journal for an entire year—every issue worth a year's subscription. Address,

Standard Poultry Journal
Gravity, Ia.

OREGON, WASHINGTON, IDAHO, and the Northwest Pacific Coast. You want to

know all about their wonderful resources. Send stamp for sample copy of the great agricultural paper of that section. **NORTHWEST PACIFIC FARMER,** Portland, Oregon

Virginia Homes.

You learn all about Virginia Lands, Soil, Water, Climate, Resources, Products, Fruit, mode of cultivation, price, etc., by reading

The Virginia Farmer.

Send 10c. for a three months subscription to **FARMER Co.,**

16-1f **EMPORIA, VA.**

The American FANCIER and BREEDER.

A MONTHLY MAGAZINE DEVOTED TO POULTRY CULTURE.

Vol. 21.

DE KALB, ILLINOIS, JANUARY, 1904.

No. 1.

Forms of Poultry Houses.

Probably we have not yet arrived at the ideal poultry house, which should be both serviceable and pleasing to the eye. A good many experiments have been made, and a good deal of light shed on the subject. It is possible that there is no such thing as an ideal poultry house, but that the kind and cost will depend on the location and the locality in which it is to stand. A millionaire will doubtless prefer to build his house of expensive material, paint it an expensive color, and have a good many frills around it. Out on the western prairie, miles away from any other farm, the settler will not be so much concerned about looks, but will construct his poultry house with the one idea of utility. If he finds sod a good material for building sod will be used. The dryness of the atmosphere or its moistness will also modify the character of any such a house as may be constructed. Sod can be used in western Nebraska and like localities where the rainfall is light. In fact, where the house can be kept dry, a cave will serve many useful purposes, as it will be impenetrable to the cold of winter and to the heat of summer.

There was a time when poultry houses were sunk into the ground, and cellars were constructed for the use of the fowls even in the humid states of the Union. But these have been, to a considerable extent, abandoned, owing to dampness, which seems to be as hard on fowls as on human beings. However, we have known of some very successful poultry arrangements of this kind. The writer knows of one wealthy woman who had a poultry house constructed over a cellar dug for the purpose. The house was a good-sized one and the cellar was as large as the house. In the upper part of the building were kept all kinds of feed and poultry appliances. A hundred hens roosted and laid in the cavern below, which was both light and dry. These hens were very profitable. The use of cement makes the poultry cave a possibility without the attendant dampness. The placing of double windows and the providing of ventilation are two things that should be looked after where the cave is used.

In the building of poultry houses above ground, the square house gives the most room for the least money. But this kind of a house is not popular. The long house is most preferred by the public. If one will go to the establishments of the most prominent poultry raisers, he will find long, nar-

row houses some of them not more than ten feet wide and a hundred feet or more long.

This seems to give the best result, where the fowls are to be kept in small flocks and allowed to run in yards. If fowls were to be kept in one large flock. But the necessity for dividing the flock makes the long, narrow house the most serviceable. It is certainly cheaper to build one long house than several short ones, as the end partitions of all but one house are saved. The flocks in the long house are separated by wire only and this is very expensive.

Faulty Brooding.

The way old controversies and opinions are rebased and brought out as new is amusing. Now a number of writers are claiming to have discovered that we are keeping our brooder chicks altogether too warm and attempt to show that it is contrary to nature and detrimental to the chicks. Several years ago this same controversy went the rounds of the poultry press and those favoring the warm brooders came out ahead, or rather the larger proportion of poultry accepted their theory. Some who favored less heat and conducted their brooding system on scientific principles were successful, but most of those who attempted to raise chicks with the temperature below 80 failed. On the other hand those who kept their chicks confined in small brooders heated to 90 or more met with heavy loss. There is a happy medium between these two extremes which will lessen the mortality, the rationality of which can be demonstrated by a little thought and observation.

We cannot take the hen as a guide, for left to herself in nine cases out of ten she will kill or lose her brood. We know she is wholly incompetent to care for a brood in cold weather, if allowed much range, because she will not hover them sufficiently. Nature did not design that she should raise a brood out of the natural breeding season and did not equip her for the task. But she does, when hovering her young, supply the proper amount of heat and in the right manner. The temperature of the body of the hen is about 100 degrees and she probably imparts a warmth of about 95 degrees to the back of the chick. The chick itself is some what warmer than this, at two weeks old being about 103 degrees. The air under the hen is several degrees cooler than her body and is kept fresh by slight additions which percolate through the feathers into her small brooder. The feet of the chicks are not

cold as some writers assert, but the whole nest is warmed and the chick sits upon its feet, thus warming them.

So we find that for very young chicks we require a heat of 90 degrees, but they must not be confined in such a temperature and forced to breathe air thus heated. It is only necessary that they have this warm place to run to when cold and when at rest. The larger portion of the brooder or exercising room should not be kept above 75 degrees. In the northern states April and May are the natural breeding months and those most propitious for raising chicks. At this time the out door temperature seldom falls below 60 or rises above 80. Sometimes it is cooler at night but then the chicks are safe under biddie or in the brooder. This shows us then that 60 to 80 is the proper temperature for the exercising pen, so we take 70 the average, as the proper heat for the building. As the chicks grow they generate more heat, so that supplied can be gradually reduced until at the end of the third week it has been lowered to 70 degrees under the hovers. Do not, however, reduce the heat all at once, or ten degrees or more at a time, or the chicks will get chilled, but do so gradually, a degree or so, a day. During the first week the temperature should not be allowed to fall below 90. When raised in a brooder house where it is possible to maintain an even temperature of 70 degrees they can be placed under cold hovers at the end of the third week.

Chicks can be acclimated to certain temperatures and conditions but if we make the changes abruptly many will die. The ideal brooders will supply heat by contact direct to the chicks backs, or in lieu of this, the proper amount by radiation and have cooler places that the chicks may seek if the heat is uncomfortable. There is much chance for improvement in our present brooding systems, but with such as we have we can give the old hen cards and spades and beat her caring for chicks in cold weather.—Standard.

The case you give this month makes our un makes your hens for next winter.

Reports from all quarters indicate a short turkey crop. This will make other poultry a better price and help the poultry market generally.

Begin now to select your show birds and breeders for next season. The best time to begin to breed chicks is when the breeding stock is selected.

G. S. BANTAMS.



Eggs from fine imported stock Bred to lay as well as for the show room. Orders hooked now for eggs to be shipped

later. Write for prices, etc.

• LEA M. MUNGER, DeKalb, Ill.

FREE 100 Magazines & Papers

We have been commissioned by over 1000 Editors, Publishers; etc., to send out SAMPLE COPIES of various Magazines, Books, News-papers, etc., and send same to every applicant sending us 15 cents (stamps or silver) to help pay postage.

The Canadian, United States & British Subscription Agency, Halifax, N. S., Canada.

PATENTS promptly obtained OR NO FEE. Trade-Marks, Caveats, Copyrights and Labels registered. TWENTY YEARS' PRACTICE. Highest references. Send model, sketch or photo. for free report on patentability. All business confidential. HAND-BOOK FREE. Explains everything. Tells How to Obtain and Sell Patents, What Inventions Will Pay, How to Get a Partner, explains best mechanical movements, and contains 300 other subjects of importance to inventors. Address, H. B. WILLSON & CO. Patent Attorneys 745 F Street North. WASHINGTON, D. C.

The Shareholder

is Wall Street's leading Financial paper and is the only paper reporting actual sales of mining, oil and other Unlisted Securities. If you have stock for Sale or Exchange communicate with the Exchange Department, THE SHAREHOLDER, 68 Wall Street. New York.

Poultry Pays Better

than anything else the farmer or fancier raises—if it is done right. Any old way will not do. The Reliable Poultry Journal is the source of more information on poultry than can be obtained elsewhere, and by studying it you can make your fowls pay a big profit. It tells how to get more eggs; how to prepare fowls for market, and all about poultry raising for exhibition. Fully illustrated. Send today for free sample copy RELIABLE POULTRY JOURNAL, BOX A-4, QUINCY, ILL.

Do You Know about the CLUBBING OFFERS of the MODERN FARMER? Nothing like them was ever before made on this Continent. Ask for FREE SAMPLE COPY, and learn all about them before you subscribe for any other paper. They will save you money. Modern Farmer, St. Joseph, Mo.

Aurora Has \$1,600 Ore.

RICH STRIKE AT DEPTH IN A MEXICAN PROPERTY.

ENSENADA, Mex., Jan. 1.—News just received from the Alamo camp states that a tremendous strike of rich ore has been uncovered on the Aurora group. The Aurora company, under the management of Douglas, Lacey & Co., have for the last six months been devoting all their energies to the opening up of this remarkable group of mines.

It has been a theory that the different veins in these mines, which are divided by dykes, would converge at a depth of 400 or 500 feet, and that although the ore so far encountered is of excessive value, the values would become greater with depth and the final converging of the several veins into a permanent and solid vein.

This result has been accomplished. Ore ranging up into \$1,600 to the ton has been found and the whole vein on an average assay test runs \$650 to the ton. The estimated value of the ore now exposed in the Prieta alone, on a low calculation, is over \$750,000.

This group of mines, despite their richness, are badly handicapped on account of lack of power for milling purposes. It costs \$6 per ton for wood alone to mill every ton of ore at Alamo, to say nothing of the cost of extraction, which on account of isolation from every advantage of civilization, is excessively high.

It is currently reported that within the next six months the Douglas Lacey company will build at Ensenada a large power plant sufficient in capacity to operate their five mines and other outside mines now shut down on account of lack of fuel and power. The business men, banks and manufacturers are elated over the report that the power plant will be built in this city, and the land for the site, they say, will be donated, and it will be guaranteed that Ensenada alone will take sufficient power from the new plant to pay all operating expenses. The income from the mines at Alamo would in that case be net. In its conception it was intended to locate the new plant in the Pinerias, about twenty miles north of the Aurora and Viznaga mines, but a careful survey of the situation seems to make it much more advantageous to locate the power plant here. In the first place, the cost of freighting the electric machinery to the Pinerias from the Coast would not be less than \$20,000; and, further, no power could be utilized anywhere except at the mines.

Now, with the electric power plant here, enough power can be sold to pay all pay all operating expenses, while the telephone poles from Ensenada to Alamo can be used without additional cost for stringing the wire and oil will save fully 25 per cent. over the cost of the wood at the Pinerias, which from time to time must become more and more expensive, as the wood is cut away from

AGENT WANTED

Good man in every county to sell

OSGOOD FARM AND STOCK SCALES

most complete line made. 1903-4 Patterns, Steel Lever Stock Scales are beauties. Prefer man experienced in selling machinery and implements. Fine Catalogue. No samples. Can be handled nicely as side line. Liberal contract Exclusive agency. Have you that man in mind? Show him this paper. He can make money. We want him now. Act quick. Osgood Scale Co., Binghamton, N. Y. Largest Makers of Farm Scales in this Country.

20,000 ACRES

WISCONSIN FARM LANDS FOR SALE.

These lands are beautiful, rolling prairie and timber lands, bottom and marsh lands, also cut over timber lands. The soils are composed of black loam, loam and clay, loam clay and sand making them very productive for grain, potatoes, hay and clover. This country is mostly rolling and literally peppered with little lakes and streams, and four railroads cross this section and all are within easy reach of stations in Central Wisconsin. Prices range from \$7.50 to \$15.00 for wild farm lands, \$20 to \$40. for improved farms. Free transportation to those who buy. Write for full information.

F. M. MUNGER & SONS, DeKalb, Ill.

the neighborhood of the plant. Should the oil supply, on the other hand, fail (which is not at all likely) there will be sufficient supply from up the coast that can be had at the present time as low as the cost of the wood at the Pinerias.

With this big power plant in operation—1,000 H. P.—the mines at Alamo could well afford to pay the same price for electric power as they now pay for wood, which is \$6 per cord, for they would have what they can never have under present conditions—enough wood to mill one-quarter of the ore supply, for it will be an easy matter to mill 150 tons of ore per day, and this power plant should be one of the largest dividend industrials in the country.

It is not a mill that is depending upon the market or sale value of its products is always worth \$20 to the ounce and the demand never lessens. That this power plant will have an increasing tonnage is evident by the constant increasing output of these valuable mines. It has been rumored that a syndicate has made an offer of several millions of dollars for the properties in the Alamo district controlled by the Aurora company.

There is more excitement at Paral Mexico over an unusually rich body of ore. The vein is said to be five feet wide and assays \$4,000 gold and 2,000 ounces silver to the ton.

Pertinent Paragraphs.

Dry ground is the best ground for a poultry house

Meat in the rations stimulates the hens to lay freely.

Force the hens to moult before the cold weather is on.

Hens that are good at laying are seldom good at sitting.

The hen that is made or let to become to fat will lay no eggs.

Can you get milk for your chicks? It is a valuable food for them.

Without occasional infusions of new blood the flock tends rapidly to scrubdom.

Except in the mating season, the hens and pullets are better off separate from the males.

It isn't at all necessary to have a fine or fancy poultry house. Comfort is all a laying hen cares for.

If possible separate the males from the females during the winter. Both sexes will profit by doing this.

The hen herself seems to have nothing more to say or do than has the hammer in the hands of the carpenter.

Some hen ailments called cholera are not cholera at all. Most of them will disappear if the drink and feed and quarters are all right. Filthy water will sicken the fowls.

She is used simply as a tool, a machine, an instrument. She can't "do" anything. Everything is done for her and to her. Even she is done sometimes by ignorant owners.

Summer hatched chicks should have shade for several weeks at the start, dry feed and not soft feed, and plenty of clean, fresh water. This will bring them on in spite of the heat.

The poultryman selects his breed, makes the rations, locates, plans and builds the houses, provides the ranges and governs every step in the work of hatching, feeding and handling.—Commercial Poultry.

Feeding at this Season.

Feeding requires judgment, as the individuals of a flock differ in their preferences and dislikes for foods, while some will secure more than others. Scattering the food, wherever possible, gives each fowl better opportunities for securing its share. The farmer who simply "winters" his stock until spring loses valuable time unless his object is to gain in weight of product. Many farmers are satisfied to have the stock come out in the spring in as good condition as the birds were in the fall, but something more should be expected than for the stock to "keep" over winter. Every fowl that does not make a gain causes a loss, as labor is required, and the most profitable plan is to feed liberally and endeavor to gain as much as possible. A variety of food in winter is important if the hens are expected to pay

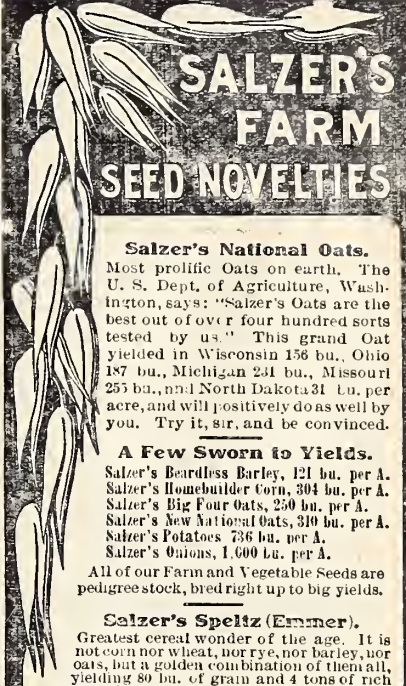
and among the essentials may be mentioned lean meat. Of the grains, not only corn and wheat should be used, but oats, buckwheat and millet-seed. A mess of soft food in the morning, consisting of bran, meal linseed or cotton-seed meal and a little ground bone is excellent, as these substances combined contain phosphate, nitrogen, lime and carbon—just the material for eggs. Green or bulky food may be furnished in the way of chopped cabbage, early rye finely cut clover, or boiled turnips, carrots or potatoes. The object should be to change the food often as there is more advantage in variety than in quantity. Feed early in the morning and laze at night. If the fowls begin to get to fat, it shows that the food is too carbonaceous, and the grain ration should then be reduced. When once the hens begin to lay, they will not fatten too much, as the eggs cause a heavy demand for food. During a resting spell, however, with heavy feeding, they sometimes become too fat. It is best to feed only twice a day.—FARM & FIRESIDE.

A Few Bantams.

We have in our Standards the three varieties of Japanese Bantams and the two varieties of Polished Bantams. These three varieties of bantams have so greatly improved in the last few years as scarcely to be recognized even as an imitation of their former selves. The Polish Bantams, especially the Whites, have been brought up to level in quality with the large Polish, but the Buff have been allowed to drop almost if not entirely out of sight.

The pure white and pure black Japanese Bantams have been carried along to a state of profecation that it is surprising. Some of them are handsome in form and feather as to attract the special attention of the experienced amateur. While the Black-Tailed Whites have not been improved quite so much as have the other two, they are very much better in form and color than ever before. The shortness of leg, the droop of the wing, and the carriage of fully furnished tail have so exaggerated or improved as to add very greatly to their beauty. In addition to these there are several nonstandard varieties, one of which is called the Gray Japanese, that is colored somewhat like the Siler Duckwing Game, while the Brown or Golden Japanese is in color much like the Golden Duckwing Games. In addition to these there have been produced some fairly good buff-colored specimens. These we presume are the natural outcome, as many of the early-day bantams were of a brownish color and it would not be very difficult to bring them to a passable or admissible buff color.—FEATHER.

Appearance has much influence upon the sale of poultry in market, and if we wish to receive the outside price we must send it to market, live or dressed, only in the best condition possible.



SALZER'S FARM SEED NOVELTIES

Salzer's National Oats.
Most prolific Oats on earth. The U. S. Dept. of Agriculture, Washington, says: "Salzer's Oats are the best out of over four hundred sorts tested by us." This grand Oat yielded in Wisconsin 156 bu., Ohio 187 bu., Michigan 241 bu., Missouri 255 bu., and North Dakota 31 bu. per acre, and will positively do as well by you. Try it, sir, and be convinced.

A Few Sworn to Yields.
Salzer's Beardless Barley, 121 bu. per A.
Salzer's Homebuilder Corn, 304 bu. per A.
Salzer's Big Four Oats, 250 bu. per A.
Salzer's New National Oats, 310 bu. per A.
Salzer's Potatoes, 736 bu. per A.
Salzer's Onions, 1,600 bu. per A.
All of our Farm and Vegetable Seeds are pedigreed stock, bred right up to big yields.

Salzer's Speltz (Emmer).
Greatest cereal wonder of the age. It is not corn nor wheat, nor rye, nor barley, nor oats, but a golden combination of them all, yielding 80 bu. of grain and 4 tons of rich straw hay per acre. Greatest stock food on earth. Does well everywhere.


Salzer's Million Dollar Grass.
Most talked of grass on earth. Editors and College Professors and Agricultural Lecturers praise it without stint; yields 14 tons of rich hay and lots of pasture besides, per acre.

Salzer's Teosinte.
Salzer's Teosinte produces 113 rich, juicy, sweet, leafy stalks from one kernel of seed, 14 feet high in 90 days; yielding fully 80 tons of green fodder per acre, doing well everywhere, East, West, South or North.

Grasses and Clovers.
Only large growers of grasses and clovers for seed in America. Operate over 5,000 acres. Our seeds are warranted. We make a great specialty of Grasses and Clovers, Fodder Plants, Corn, Potatoes, Onions, Cabbage, and all sorts of Vegetable Seeds.

For 10c in Stamps
and the name of this paper, we will send you a lot of farm seed samples, including some of above, together with our mammoth 140 page illustrated catalogue, for but 10c in postage stamps.

Send for same to-day.



JOHN A. SALZER SEED CO.

LA CROSSE, WIS.

3 MONTHS FREE

Send for a free sample copy of THE AMERICAN ADVISER—the most remarkable investment journal published. Full information concerning the many golden opportunities offered by the mining, oil and industrial stocks. Fully illustrated; well edited; reliable; impartial. No investor should be without it. Write today. Est. 11 yrs.

THE AMERICAN ADVISER.

515-87 Washington St Chicago.

200-EGG INCUBATOR \$12.80

This perfect 200-egg Wood-
en Hen at \$12.80 is a
startling trade innovation.
It will do the work of the
most costly hatcher, and
always keeps in order.
Hatches every fertile egg.
Catalogue with fourteen
colored views sent free.
GEO. H. STULL, Quincy, Ill.



The AMERICAN FANCIER and BREEDER

Published the 15th of each month.

By The AMERICAN FANCIER and BREEDER PUB., CO.

DE KALB, ILL., JANUARY, 1904.

Subscription Price.—25 Cents per year in advance. Single copies 3 cts. Subscriptions can commence with any month.

Advertisements in the AMERICAN FANCIER & BREEDER must be paid for in advance. The low price at which they are inserted makes it impossible to do otherwise.

We invite Correspondence on all subjects pertaining to poultry keeping. Send in your experience.

Entered at the postoffice at De Kalb, Illinois, as second class matter.

ADVERTISING RATES.

ONE INSERTION 10 CENTS PER AGATE LINE.
YEARLY RATE 5 CENTS PER AGATE LINE.

(14 lines to an inch, single column.)

Reading Notice 15 cts. Per line.

No Advertisement accepted for less than \$1

Time Discounts.

Time	Discount	Cents Per Line.
1 Month.	10	10
2 Months.	9	9
3 "	8	8
6 "	6	6
12 "	5	5

This notice marked denotes that your subscription has expired. Please renew your subscription for another year.

WHITE WYANDOTTE CLUB MEETING.

The fifth annual meeting of the National White Wyandotte Club will be held January 29th to February 4th, 1904. Silver cups are being offered by the club in nearly every state, and a fine list of cash specials will be offered at the Rochester Show. The club now numbers over 800 members and is the largest specialty club in America whose annual dues amount to \$1.00 or more. Every breeder of White Wyandottes is invited this club and send for free catalogue.

ROSS C. H. HALLOCK, Sec.,
St. Louis, Mo.

Waterville, N. Y. Nov. 18, 1903.

Mr. W. F. Chamberlain,

Kirkwood, Mo.

Dear Sir:— "We are having excellent reports from several students using "CHAMBERLAIN'S PERFECT CHICK FEED" and do not hesitate to recommend it.

Very truly yours,

Columbia School of Poultry Culture,

A. N. Brigham, Director.

10,000 PLANTS FOR 16c.

This is a remarkable offer the John A. Salzer Seed Co., LaCrosse, Wis., makes. They will send you their big plant and seed catalogue, together with enough seed to grow

1,000 fine, solid Cabbage.
2,000 delicious Carrots.
2,000 rich, nutty Celery,
2,000 rich, buttery Lettuce,
1,000 splendid Onions,
1,000 rare, luscious Radishes,
1,000 gloriously brilliant Flowers.

ALL FOR BUT 16c POSTAGE.

providing you will return this notice, and if you will send them 20c in postage, they will add to the above a package of the famous Berliner Cauliflower. F. P.

THE CHICAGO SHOW.

The full list of judges to date are:

Theo. Hewes, Indianapolis, Ind., Thos. F. Rigg, Iowa Falls, Ia., T. F. McGrew, 1257 Broadway, New York, James A. Tucker, Concord, Mich., E. W. Rankin, St. Paul, Minn., Frank Heck, Chicago, Ill., Geo. C. Burgott, Lawton Station, New York, D. J. Lambert Apponug, R. I., Sharpe Buttergeld, Windsor, Ont., T. E. Orr, Beaver, Pa. Dr. O. P. Bennet, Mazon, Ill., Chas. McClave, New London, O., M. V. Caldwell, Leetonia, O., Geo. H. Northrup, Raceville, N. Y., C. E. Twombly, Boston, Mass., Oscar Rehe, Chicago, Ill., L. A. Jansen, Milwaukee, Wis., Geo. W. Gorse, Highlandville, Mass., Geo. Ewald, Cincinnati, O., Geo. J. Asman, Detroit, Mich., R. W. Wales, Iowa City, Ia.

The work designed for the late lamented John Glasgow will now be appointed to to some of his associates. It is possible one or more additional may be appointed.

Nearly all the space set aside for the exhibition of Incubators, Brooders, Poultry Appliances, Foods, etc., has been taken, insuring a great success in this department.

The prizes in the Poultry Department will be \$5.00 first and \$2.00 second; a 3rd, 4th, and 5th will also be given, should there be specimens in the class worthy of the honor. In the Pigeon Department a first, \$2.00, second \$1.00 and 3rd, 4th and 5th, if specimens worthy are entered, will be awarded.

More than 600 specials are offered.

Arrangements have been made with the Western and Central Passenger Associations for a special reduced rate of ONE AND ONE-THIRD for all exhibitors.

For full information see premium list. It was the design to mail to all interested person but if from accident or mistake all have not been received; or if additional copies either of premium lists or entry blanks are desired, address

Fred L. Kimmey, Secretary, Room 1213 Manhattan Bldg., Chicago, Ill.

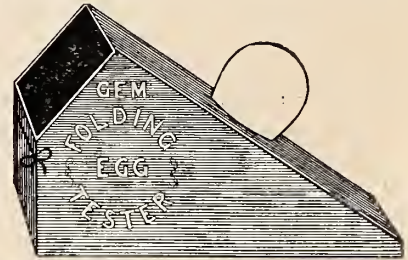
A sick bird should on no account be permitted to drink with the general flock. Remove ailing birds and scald all drinking vessels with boiling water.

Fowls should be given their morning meal just as soon as they come off the roost. They are hungry after a nights fasting, and should be fed at once.

An Egg Tester Free.



WHY put infertile eggs under the hen or in the incubator, or cook any but the freshest eggs? The egg-tester shown herewith turns the X-ray, as it were, on an egg, and permits one to see in half a second whether an egg is fresh or stale. It can be used in the day time as well as at night. It will not get out of order, and it will last a lifetime.



OPEN

With it goes full directions for testing eggs for both table use and hatching. Our readers can get one of these valuable and interesting articles

FREE AND POSTPAID!

together with an incubator and brooder catalogue, containing among much other valuable and interesting information a colored plate, showing by eighteen views the development of the chick in the shell, FREE, by



CLOSED

mentioning the AMERICAN FANCIER & BREEDER and sending to GEO. H. STAHL, Quincy, Ill. This is a very generous proposition indeed. It is made to the readers of only a few papers, that Mr. Stahl esteems the most highly, and our readers are certainly fortunate that this offer is made to them.

If you want to stop your Light Brahmas from laying, feed them all they want. We have found that the egg production of this breed, more than any other, is lessened by over feeding. Feed twice a day, giving not more than they will eat up clean before resting.

When you begin to feed the fowls for market, separate them from the ones that are intended for future service, for these should not have much fattening feed.

Getting the Hens to Laying.

How to get the hens to laying during the cold days of early winter has been a great puzzle, and it is amusing to note the various plans that some people adopt in their efforts to bring about this result. The conditions of winter are very different from those of summer. Some persons seem to forget this and go at the task of trying to get winter eggs on about the same plans as they would in warm weather. If a hen has been so well cared for during the moulting season and early fall as to be in the pink of condition. I can see no reason, if we make her surroundings, as far as possible, like those in summer, why she should not produce a good many eggs through the winter. She needs warmth, a variety of nutritious food and plenty of vigorous exercise. She should have a perfectly dry and warm house. I say perfectly dry; this is very important in housing poultry. I find that a great many of the so-called dry comfortable houses are very damp at times. At each driving rain storm the water comes in a little here and a little there, and this with the moisture from the fowls causes the buildings to be very damp at times. This should not be if you expect to keep the birds in the best of condition, and besides this there is great danger of roup in the flock from such damp exposure, and if this disease once gets a hold among your fowls, your efforts to get winter eggs will be in vain. Give them plenty of room. A room 8 by 12 is none to large for 25 hens and to this should be attached a run. Do not make the mistake of having one side of the building all glass. For a room 8 by twelve one sash will answer, or two at the most. Arrange the building and fixtures so as to make it homelike for the hens.

In feeding try to imitate nature as far as possible. Remember that in spring and summer they get the nutritious, but bulky food; grass, cut clover steamed and mixed with a little bran comes about as near taking the place of this as anything. A light feed of this each morning or evening will help wonderfully. Green cut meat and bone answer in the place of the bugs and insects and a little should be fed each day, say one pound to 18 or 20 fowls. Next if you can learn to regulate the amount to feed the hens daily, or at each meal, you will stand a good show of being a successful winter poultry man. For each fowl of the small varieties, give one ounce and to the larger breeds one and a quarter to one and a third ounce of a mash made up as follows: equal parts of wheat bran, middlings, ground oats, corn meal and animal meal, wet up with skim milk if you have it, and feed one half of this amount in morning and balance at night or towards evening. By giving a light feed of the mash the hens are more free to take exercise in search of dry grain which be scattered in the little more or less the entire time, the exercise which they get

serves as an invigorating tonic, keeps away disease and bad habits. It is fully as important as the food itself. Cabbage, beets, and other green stuff should not be forgotten. Use your own good judgement in varying from the above rules as the condition of the the hens may require. Experience and close observation are the best teachers—V. M. Couch.

Money in Bantams.

Bantams are profitable fowls to raise. They are productive and the hens of many of the varieties make excellent mothers. Their eggs are of superior richness and flavor. Epicures delight in them, while delicate invalids crave them. No more delicious meat can be found than Bantams when properly served. Besides their value as market birds the little fellows are delightful pets and sell readily when rightly introduced. We believe a handsome trade can be worked up by breeders of these fowls. Special customers can be secured and high prices obtained. It is the specialist in any line of work who catches the prize.

It is only in exceptional cases that it is advisable to keep hens after they are two years old, as after that time they are past their prime as egg-producers and will not pay as well as pullets. The early hatched pullets and the yearling hens that moult early make the best winter layers, and the eggs in winter pay a good profit on the food consumed. Feed the chickens extra well now and keep them laying; for if cold weather strikes them they are liable not to lay again until warm weather in the spring; whereas if they are well taken care of they will continue to lay all through the winter.

Save plenty of cabbage for the poultry. An excellent way is to bury them the same as potatoes. Shovel off the surface earth, placing the cabbage heads in a pyramid. Cover with straw, then with earth sufficient for protection but not too deep, as they will heat and decay. Leave ventilation at the top. They will keep fresh and be highly appreciated by the hens. I think it far preferable to storing them in cellar or outhouse.

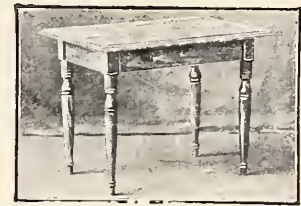
Dry picked poultry always brings more per pound than that which has been scalded, both on account of its superior flavor and its attractive appearance. Scalding partially cooks the delicate skin, rendering it dry and wrinkled when cold, and discolored with reddish splotches. The shrinkage is also greater than if no hot water had touched it, though the bird when warm may appear, if anything, more round and plump.

Charcoal is a good corrector of chicken ailments and it is well to feed it quite often during the winter. Put some ears of corn in the stove and roast them good and brown and if some of them are black it is all the better. Feed it to the chickens on cold, raw mornings and you will find that it increases the contents of the egg basket.

NEW INVENTIONS.

- Reported especially for this paper by H. B. Wilson & Co., Patent Attorneys, 8th and F Sts. N. W. Washington, D. C.
- A Complete Copy of any of these patents will be forwarded to any person by Messrs. Wilson & Co., on receipt of ten cents. Persons ordering Copies must give number of patent.
- 745323 Hog catcher, Harry O. Carns, Basco Ill.
- 745458 Electrical Incudator, Frank C. Perkins, Buffalo, N. Y.
- 747243 Poultry House, Gerard C. Scott, Columbus, O.
- 746790 Chicken or Fowl Fountain, Stephen H. Church, Los Angeles, Cal.
- 746799 Incubator, Henry C. Donohoe, Des Moines, Iowa.

The Childrens Table.



Size 18x24. 18 inches High Strong & Durable. Money refunded if not as represented. Price \$1.25.

NEWAYGO NOVELTY CO.,
Newaygo, Mich.

\$10 Buys a 200 Egg Perfect Hatcher and Brooder. Test & Illustrated Cir 2e.
J. A. Chelton, Fairmount, Md.

BREEDERS CARDS.

CARDS of 30 words or less, in card column,
1 insertion 50 cents, 3 insertions \$1.00,
6 insertions \$1.75, 12 insertions \$3.00.

Cards with small illustration, of 20 words or less at the above rates. Over this number of words in plain or illustrated cards, 2 cents for each extra word. All cards must be paid for in advance.

CHICKENS, Ducks, Geese, Turkeys, Guinea fowls, Pea fowl, Belgian Hares, Rabbits, Guinea Pigs, Rats, Mice, Dogs, Cats, King Doves. Eggs for hatching. State wants. Wm. A. Bartlett, Box 34, Jacksonville, Ill.

Poultry Breeders send 50c for a 20-paged monthly devoted to poultry, etc. Sample 3 cents. "Michigan Poultry Breeder," Battle Creek, Mich. Or send 55 cents and receive "Michigan Poultry Breeder," and THE AMERICAN FANCIER & BREEDER both 1 year.

PIGEON Book, illustrating, describing all varieties, arranging loft, feeding, breeding, caring for, 5 cents. 1,000 Pigeons for sale, prices sent free. Wm. Bartlett & Co., Box 34, Jacksonville, Ill.

EXPRESS PREPAID. WHITE WYANDOTTE Specialist. Exclusive business, stock and eggs in Season. Entire satisfaction guaranteed or you money back. Circular free. Arthur F. Hartman, Box 163, Nappanee, Ind.

BUFF WYANDOTTES AND BUFF Leghorns. Eggs from first prize stock at Erie, Painsville and Warren at \$1.50 per 15. Geo. Sapper, 154 E. 21 St., Erie, Pa. R. 2.

THE KLONDIKE HEN—AMERICA'S wonderful new breed. Greatest winter layers in the world. Send stamp for catalog. Klondike Poultry Yards, Maple Park, Ill.

OIL = SMELTER = MINES !

- WESTERN BRANCH -

DOUGLAS, LACEY & CO.,

BANKERS AND BROKERS,

Willard & Yates, Managers,

Suite 518 New York Life Bldg.

171 La Salle St.

= CHICAGO =

DIVIDEND · PAYING

❖ MINING, OIL AND SMELTER STOCKS. ❖

We have demonstrated by our methods that an investment can be made in mining shares, just as safely as in any other line of business, and with far better returns. We are offering only the stocks of the various companies for which we act as Fiscal Agents.

Most of these stocks are now steady dividend payers, equalling from 9 to 15 per cent annual interest upon the investment payable quarterly. Many of them pay a much higher rate where the stocks were bought upon the first offering.

Our clientele is largely a conservative line of investors who have confidence in our indorsement and recommendation of any investment and conservative business methods. We have now nearly 10,000 regular customers throughout this country and the Dominion, and we have yet to know of a single one of them that is dissatisfied.

Our plan is a perfect guarantee to an investor and our feature of combination places an investment, as we believe, beyond any possible chance of loss.

When we have placed with our customers the amount of treasury stock of any company necessary for its development, our labors and responsibilities have but just begun. We must stay with the property and our customers' financial interests therein; must see that it is intelligently, economically and honestly operated; and, having a conditional interest in the profits of the property, secondary to the interests of our customers, if we followed any other policy than that of keeping strict supervision of its management, even although it might take a much longer time than was anticipated to demonstrate the actual value of the property and place it upon an independent dividend-earning basis, we would most assuredly be negligent not only of our customers' interest, but of our own as well.

The following remark recently made regarding our firm by one of the well-known financiers of New York was both flattering and appreciated, for it expressed what we are striving for:

"DOUGLAS, LACEY & COMPANY HAVE SUCCEEDED BY THEIR BUSINESS-LIKE METHODS IN MAKING MINING INVESTMENTS RESPECTABLE AS THEY SHOULD BE"

Booklets giving our successful plan for realizing the large interest and profits of legitimate Mining, Oil and Smelter Investments, subscription blanks, full particulars, etc., sent free on application to all who mention this Journal.

Address all communications to

❖ WILLARD & YATES, ❖

171 La Salle Street.

CHICAGO, ILL.

Show Dates, 1903-4.

This list of shows is, as far as we know, complete. If some are omitted we will be glad to have the secretaries inform us. All dates will be kept standing until the show occurs.

- Jan 4-8-Olney, Ill Judge Heimlich E Dalton, secretary
- Jan 4-6-New York City Complete corps of judges as usual H V Crawford, secretary, Montclair, N J
- Jan 4-9-Wichita, Kas. Judge Felch H W Schoff, secretary
- Jan 4-11-Milwaukee, Wis Judges, Burgett and Mortgaridge W A Hackbarth, secretary, 166 Wyoming place
- Jan 5-8-Lewiston Me Judges, Hawkins, Lambert, Atherton, Coffin A L Merrill, secretary, Auburn, Me.
- Jan 5-9-Danville, Ill Frank B Smith, sec
- Jan 5-8-Grand Rapids, Mich Judges, Tucker and Sites F A Votey, secretary
- Jan 5-10-Kansas City, Mo C S Hunting, secretary, 3817 E 13th Street
- Jan 5-9-St Albans, Vt Judges, Rapp and Northrop H M Barret, secretary
- Jan 6-8-Adams, Mass Judge, Ballou A W Safford, secretary
- Jan 6-9-Waxahachie, Tex C T Spaulding secretary
- Jan 6-9-Tiffin, O Judge, Hewes V Crabtree, secretary
- Jan 6-9-Austin, Minn. Judge, Holden Frank Cronon, secretary
- Jan 7-9-Clarksburg, W Va. Judge, Ellisen H D Correll, sec, Morgantown, W Va
- Jan 10-14-Topeka, Kas Judges, Rhodes, Russell, Savage J W F Hughes, secretary
- Jan 11-16-Cedar Rapids, Ia Judges, McClave, Shanklin and Warnock A J Smith, secretary
- Jan 11-16-Kenosha, Wis Judge, Ellison J L Pofahl, secretary
- Jan 11-15-Charleston, Ill Judge, Rapp C L Carney, secretary
- Jan 11-17-Watertown, Wis H A Holdridge, secretary
- Jan 12-14-Fort Worth, Tex J M Jones secretary
- Jan 12-15-Charlotte, N C Judge, Marshall W B Alexander, secretary
- Jan 12-15-Middletown, Conn Judges Card, Nichols W J Kieft, secretary
- Jan 12-14-Peterboro, N H Judges, Ballou, May W H Spaulding, secretary
- Jan 14-20-Lima, O T A Collins, sec
- Jan 13-17-Cincinnati, O Judges, Hewes, Orr, Shepard A E Brook, secretary
- Jan 13-19-Lockport, N Y Judge, Zimmer W G Walker, secretary
- Jan 13-15-Muskegan, Mich Judge, Tucker J A Babcock, secretary
- Jan 18-22-Auburn, N Y Judges, Quilhot, Shea, Crocker, Foxton Fred I Roe, sec
- Jan 18-22- Traverse City, Mich Judge, Lane J M Knight, secretary
- Jan 13-19-Minneapolis, Minn Judges, Butterfield, Lambert, Holden Geo A Loth, secretary, Box 28
- Jan 19-21-Salamanca, N Y Judge, Stillman J Mable, secretary
- Jan 19-23-Boston, Mass. Complete corps of judges as usual A R Sharp, sec, Taunton, Mass
- Jan 20-24-Angola, Ind; Judge, Tucker, C. C. Carlin, secretary.

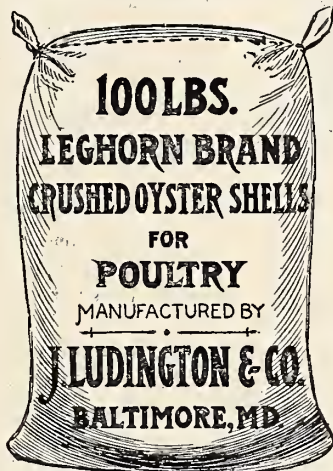
The Remington

“For good work, quick work, easy work, and all kinds of work, give me the Remington,” says the experienced operator.

REMINGTON
Typewriter Co.
327 Broadway, New York



The Remington



ONE CENT for
Postal Card ad-
dressed to us will
bring you special
prices in any quan-
tity.

- Jan 20-25-Painesville, O F G Johnson, secretary
- Jan 20-22-Nevada, Mo J R Buchanan, secretary
- Jan 20-23-Blackwell, Okla Geo M Casson, secretary
- Jan 21-25-East Palestine, O Judge, Lambert B S Gorby, secretary
- Jan 25-30-Chicago, Ill Complete corps of judges as usual F L Kimmey; secretary, 1213 Manhattan, Chicago
- Jan 26-29-Stamford, Conn W R Jessup, secretary
- Jan 27-30-Plymouth, Ind Judge, Carver Cary Cummings; secretary
- Jan 27 Feb 1-Clinton, Ia Judge, McClave W L McArthur, secretary
- Jan 25-30-Delavan, Wis Judges, Russel, Janson Seth W Gregory, secretary
- Jan 26-30-New Bedford, Mass Henry T Gridley, sec, North Dartmouth, Mass
- Jan 26-30-Harrisburg, Pa J B Gore, sec. Royalton, Pa

- Jan 29-Feb 4-Rochester, N Y E N Walbridge, secretary
- Feb 1-4-Columbia, Mich Judge, Tucker J S Carr, secretary
- Feb 1-6-Canton, O Judge, Lambert C P Bruce, secretary
- Feb 2-6-Columbus, O W A Lott, secretary, Wooster, O
- Feb. 2-6-Pontiac, Mich. Daniel Thomas, secretary.
- Feb. 5-10-Norwalk, O. Judge, Tucker, T. P. Kellogg, secretary.
- Feb 8-12-Saginaw, Mich Judge, Tucker J H Ashton, secretary
- Feb 8-14-Indianapolis, Ind Judges, Hewes, Pierce, Lane, Myers, Stoner, Jones C R Millhous, secretary, 2133 S Meridian street
- Feb 8-13-Syracuse, N Y D M Green, sec,
- Feb 11-13-Cambridge, O Judge, Orr Jas G Ford, secretary
- Feb 22-27-Pittsburg, Pa J C Moore, secretary, 1119 Penn Avenue.

Spanish Adventurers

in the days of Cortez risked their lives in the search for GOLD in OLD MEXICO, and the hardy Prospector today is suffering untold hardships, searching perhaps for years, for one of those rich bodies of ore which he knows are scattered all through the rugged portions of that romantic country. One day his pick turns up a lump of ore sparkling with gold. "Eureka! Success!" he cries—a fortune at his feet!! BUT HE MUST SHARE IT WITH OTHERS—others who alert to grasp the opportunities of life—are to become shareholders in the Company which must be formed to provide the money and brains to develop the mine. Such a Company is the United States Smelting Company who own

MEXICO



THE GUADALUPE MINE Situating In Sonora, Mexico.

The prospecting has been done—assays have been made—mining experts and engineers of the highest standing have made their reports, and over 600 feet of work in shafts and cross-cuts have proven that they are into enormous body of rich ore, which begins at the grass roots and increases in richness as depth is attained.

THIS IS A MINE, NOT A PROSPECT.

The Guadalupe Mine immediately adjoins the great LOS COCHES MINE and is on the same vein. Mr. Chas. Schafer, Superintendent of the Guadalupe Mine, formerly with the MINAS PRIETAS (one of the richest mines in the world—has paid \$60,000,000 in dividends), says: "No. 1 shaft (Guadalupe) will beat the Minas Prietas because they have no chute of ore 500 feet on the ledge without a break, and I believe No. 1 has over 1,000 feet continuous."

The shares of the United States Smelting Co. are fully paid and non-assessable. All of the shares were put in the Treasury, and the Company offers a block of stock at the opening price of

FIVE CENTS PER SHARE,

for the purpose of securing funds with which to prosecute the work of development and install a Reduction Plant.

They own the property clear of incumbrance and are actively pushing the work with funds now in the Treasury.

The standing of the officers and directors of Company is of the very highest, an assurance that its affairs will be managed intelligently and successfully.

The "GUADALUPE" Mine
Sonora, Mexico

owned by

THE UNITED STATES
SMELTING COMPANY

The Chicago Security & Trust Co. is Depository for the U. S. Smelting Co., and has charge of the issuance of its stock. They sent their representative to Mexico and they GUARANTEE the statements made in the Company's prospectus. THIS TRUST COMPANY ADVISES THE PURCHASE OF THIS STOCK AS AN INVESTMENT. The officers of the Trust Co. have purchased stock and if it is a good investment for them, why not for you, even if you do not invest as large an amount? Every share of your stock will be worth as much as any one share held by them. *A moderate investment now gives promise of a fortune.*

Five hundred shares cost \$25; 1,000 shares cost \$50; 5,000 shares cost \$250; 10,000 shares cost \$500.

No Subscription accepted for less than 500 shares. By paying an additional 10 per cent, stock can be purchased in ten equal monthly payments. *The price of the stock will soon be advanced.*

Send for a copy of the Company's prospectus, and make your subscriptions payable to the undersigned, who is personal representative of the Company for the sale of their Treasury shares. Address

W. S. DORLAND, Investment securities,
Stock Exchange Building, Chicago, Ill.

The best fowls are none too good. The medium fowls are only tolerable. The inferior fowls are a snare and a delusion.

The hen with old feathers for a coat in November and December should not be expected to lay during January or February.

Fowls are not naturally disposed to sick-

ness. If they are kept in a clean house and properly fed, sickness will not develop.

Change the water at least three times a day in the drinking-vessels. The fowls are not large drinkers, but they need to drink frequently.

Lice may appear in a poultry house with-

out any blame being attached to the owner, but if they remain there the fault is the caretaker's.

The hen always and everywhere does all that is possible for her to do in egg laying and flesh forming under the condition. She has no control over the conditions.

American Poultry Farm.

Our Matings still produce the Winners, and win the Prizes for our Patrons.

We are giving our friends and patrons the benefit of our 29 Years' Experience in Mating and Breeding. We make a specialty of

Barred and White Plymouth Rocks, Silver and White Wyandottes, White and Brown Leg-horns, Bronze Turkeys, Bantams, and Pearl Guineas.

HERE IS A GOOD RECORD.

What our patrons say:

January 3d.—The two Barred Plymouth Rock Cockerels you sold my friend, scored 93 and 91 by B. N. Pierce. I have changed my mind and want to know what you will send me a colonial breeder for. The youngest cocker I had the finest I ever saw, and also clear yellow legs, nice comb and a strong big eye. They were well barred to the skin, let me know soon. Yours truly,

A. N. HILLS.

U. S. CITY PLACE, NEB., Feb. 17, 1901.

F. M. MUNGER, De Kalb, Ill.

Dear Sir:—I bought some eggs of you some years ago. I like the stock better than from any I have been able to get since. Please send me catalogue and prices. Yours truly,

W. H. INGRAHAM.

Have won the grand Sweepstakes at Chicago and Rock Island shows, 1887 to 1894 on greatest number of birds scoring 90 points and over; 504 birds scoring 90 to 98½, a record never equalled by any breeder. We shall in the future as in the past, constantly try to please our friends and patrons and also spend much time and a large amount of money each year in improving our stock of high, pure-bred fowls. Our matings for the past year have proved very satisfactory—is a reference to the scores of the young birds will show—and our breeding yards for

Wing of "Match Mark Prince" at the head of one of our breeding pens. Match Mark Prince is a most remarkable bird in color and Markings, Clear, even surface color and nearly perfect in Eye, Comb, Legs and Shape. We value Match Mark Prince at \$100.00 on account of his valuable breeding qualities, mated with high scoring "Blue Bird" hens and pullets. A limited number of eggs from this mating at \$4.00 per 13; \$7.00 per 26.

The coming season are made up of the finest and most beautiful specimens in each variety we have ever used. These yards are selected from over 1,000 fine birds, and contain large, well matured and vigorous specimens, nearly all of them prize winners. We pack eggs in new baskets and in such a manner that they will go safely long distances by Express, to any part of the continent and hatch just as well as at home. I guarantee eggs to arrive in good order. I have shipped eggs to nearly every State and Territory, and in almost every case with good results, as I send eggs that are fresh and well fertilized by strong and vigorous male birds, and I know a good per cent of them will hatch if proper care is given. Eggs from Barred Plymouth Rocks from such sires as "Match Mark," "Blue Prince 2d," "Hero Prince 2d," "Sweepstakes 2d" "Blue Jay," \$4.00 per 13; \$7.00 per 26. Five other high scoring sires, such as "Prince Lea," "Champion Prince," "High Mark" and "Hustler" \$3.00 per 13; \$5.00 per 26 Eggs from White Plymouth Rocks, Silver and White Wyandottes, White and Brown Leghorns \$3.00 per 13; \$5.00 per 26. Turkeys eggs 50 cents each, from eight special matings. Eggs in large numbers a matter of correspondence. Birds hatched from our matings have won the highest honors in every State in the Union.

Choice Breeding Cockerels at \$2, \$3 and \$5 each.

Suitable to head any breeding yard and sure to improve your stock. 100 choice Breeding Toms and Hens \$3.00, \$4.00 and \$5.00 each. Trios and breeding pens mated for best results; not akin. My strains are noted for their full breasts, deep bodies and broad backs, their extra heavy bone, medium, short legs, vigor and hardiness, and their brilliant and perfect marked plumage. All are first-class in every respect, from prize-winning birds, selected for their size, purity of color and exhibition qualities.

VALUABLE ILLUSTRATED CATALOGUE FOR 1903. Showing matings, giving prices of fowls and eggs, also plans and cost for Poultry Houses, and other valuable information, sent free.

F. M. MUNGER & SONS,

DE KALB, ILLINOIS.

A. J. C. C. Jersey Cattle of the Highest Breeding for sale. Choice Family Cows. Heifer and Bull Calves shipped to any part of the Country. Prices and pedigrees sent on application.



"Blue Bird" Pullets.

CHAMBERLAIN'S PERFECT

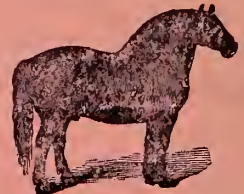
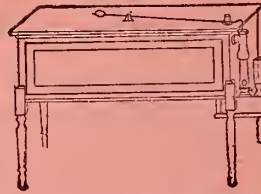
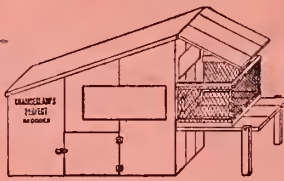
CHICK FEED.

WASH EGG FEED.

BRUODER.

INCUBATOR

Condition Powders.

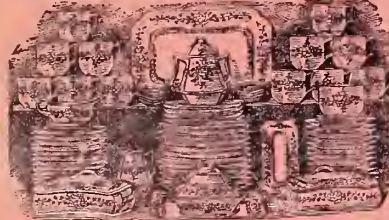


Chamberlain's poultry supplies are the standard poultry supplies of the world, and imitators all over the country use this remark "Just as good as Chamberlain's," when trying to substitute something else for Chamberlain's, thus advertising to the world that Chamberlain's goods have no equal. Eggs in fall and winter is what you want, and if you will feed Chamberlain's Perfect Wash Egg Feed early, you will have them. Chamberlain's Perfect Incubator is the Queen Hatcher of the world. Perfect Chick Feed \$2.50 per 100 lbs., Perfect Hen Feed \$2.00 per 100 lbs., Perfect Mash Egg Feed, \$1.75 per 2 bu sack. Shredded clover, \$2.50 per 100 lbs.—green as grass. See trade-mark (chick coming out of shell) is in every package of Chick Feed you buy. **FEED FOR SALE AT FOLLOWING AGENCIES:** (At St. Louis prices.) Barber & Bro. Birmingham, Ala.; Alexander Seed Co., Augusta, Ga.; Southern Poultry Supply Co., Washington, D. C.; J. Wilder & Co., Cincinnati, O.; G. B. Benedict, Elizabeth, N. J.; A. D. Woods & Sons, Louisville, Ky.; F. S. Gibson & Co., Mobile, Ala.; Waggoner & Bro., Johnsonville, Tenn.; Hoge Feed and Coal Co., Frankfort, Ky.; Hanway & Keen, Bel Air, Md.; Atlanta Seed Co., Atlanta, Ga.; J. Steckler Seed Co., New Orleans, La.; J. Wilder & Co., Cincinnati, O. Ask for prices at following agents: Norton Poultry Yards, Dallas, Tex.; W. A. Hughston, Tuscaloosa, Ala.; Southwestern Seed Co., Fayetteville, Ark.; A. H. Sorkland, Stuttgart, Ark.; H. F. Riels, Bloomingdale, Fla.; F. W. Staffel, San Antonio, Texas. **W. F. CHAMBERLAIN, The Perfect Chick Feed Man, Kirkwood, Mo.**

STARK TREES

Have a 79-YR. RECORD, built upon the strong foundation of quality and low prices. Why then waste time, land, labor and money on poor trees whose only product will be disappointment? **We PAY FREIGHT** box and pack free, arrival, guarantee entire satisfaction. **PRICE LIST, COLORED PLATES, etc., Free.** **We PAY CASH** weekly and want more home and traveling salesmen. **STARK LOUISIANA, MO.** **Huntsville, Ala.** **Dansville, N. V.**

\$1,000 REWARD



To anyone who will prove we do not do as we advertise. We want to have our marvelous household remedies used by every family in America, and we intend to give away at least 25,000 DINNER SETS in order to do this. Do you want one? Please note the only conditions: Send us your name and address and we will send you eight boxes of our remedies; sell each box at 25c, and return us ONLY \$1.00 of the \$2.00 received for the sale of our medicine. This \$1.00 is to show your good faith and that you really want the dishes. The second dollar you send us ONLY after you receive the dishes and have actually used them, and are entirely satisfied that they are equal to any \$10.00 set you can purchase in the country. We trust you with the dishes and also with \$1.00 received for our medicine. We do this because you may have been fooled by some fake concern; and we want you to thoroughly appreciate our honesty. The dinner set consists of 56 pieces, and is FULL size for family use; including soup plates, dinner, tea, and bread plates; cups and saucers, cover dishes, coffee pot, butter and milk pitcher, and cancers. Or we will allow you 50 per cent. commission for selling our assorted remedies.

They are handsomely decorated with blue, green and gold. **COLONIAL MEDICINE COMPANY, No. 71 BROADWAY, DEPT. 57, NEW YORK.**

Grow Ginseng

Little gardens pay enormous profits. 400,000,000 Chinese use ginseng for medicine, and are looking to America for the supply. The wild supply is about exhausted, so the plant must be cultivated to fill the great demand. Fall is the time to plant. Send us 4c for our ginseng book and copy of

The Ginseng Culture

a magazine which tells all about ginseng. Tells you where to buy nursery stock, when and how to plant, harvest the crop, etc. Address

Ozark Ginseng Pub., Co., Joplin, Mo.

The Pacific Oil Reporter.

Only Oil Paper On Pacific Coast. PUBLISHED WEEKLY.

Tells all about the operations of the various companies in the different fields, values of their properties, worth of their stock, kind of management, etc.

Subscription Price \$2.50 a Year.

Send for sample copy. Office, 318 Pine St., SAN FRANCISCO, CALIFORNIA.

POULTRY - CULTURE

Poultry Culture is the oldest poultry paper published in Kansas City. Full of poultry news and has a large circulation in Missouri, Kansas and Oklahoma.

50 cents per year, Sample copies on request.

Poultry Culture Pub., Co., KANSAS CITY, MISSOURI.

72 PIECES OF NEWSHEET MUSIC FREE

Chance to Join a Club That Will Help and Save Money for You. Every boy should join the Mutual Literary Music Club of America. There is nothing else like it anywhere. It costs almost nothing to join and the benefits it gives are wonderful. It enables you to purchase books and periodicals, musical instruments at special cut prices. It secures reduced rates at many hotels. It answers questions free of charge. It offers scholarships and valuable cash prizes to members. It maintains club rooms in many cities for its members. In addition, every member receives the official magazine entitled "The Literary Music Club" publication in a class by itself, including 6 pieces of high-class vocal and instrumental music (full size) each month without extra charge; 72 pieces in one year in all. **YOU CAN GET ALL OF THESE BENEFITS FOR ALMOST NOTHING.** The full yearly membership fee is One Dollar for which you get all a year, and you may withdraw any time within three months if you want to do so and get your dollar back. If you don't care to spend \$1.00, send 25 cents for three months membership. Nobody can afford to pass this offer by. You will get your money back in some many times over. Full particulars will be sent free of charge, but if you are wise you will send in your request for membership with the proper fee at once. The 25c. three months membership offer will soon change. Write at once addressing your letter and enclosing \$1.00 for full year's membership or twenty-five cents for three months to

MUTUAL LITERARY MUSIC CLUB
No. 150 Nassau St., N. Y. City.

THE Health Messenger

A monthly magazine for educating the masses to health living. Special instructions in Hygiene, Physical Culture, Nursing and Physiology with parental talks on Health topics.

A COUNCIL QUESTION BOX conducted by an able physician answers FREE any question on medical topics Price \$1.00 per year.

Send 10 cents for three months trial subscription.

HEALTH MESSENGER CO., Lamotte, Iowa.